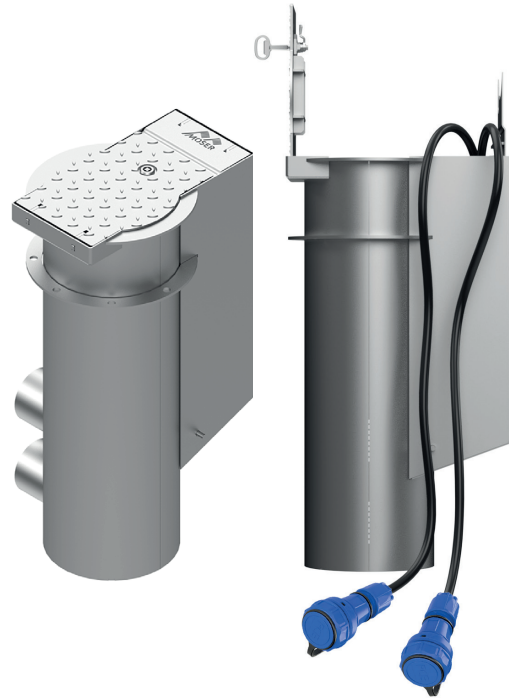




PRODUCT DATA SHEET

PAGE 1/2

Tree In-Ground Sleeve
Item no. M5049400003



TECHNICAL DATA

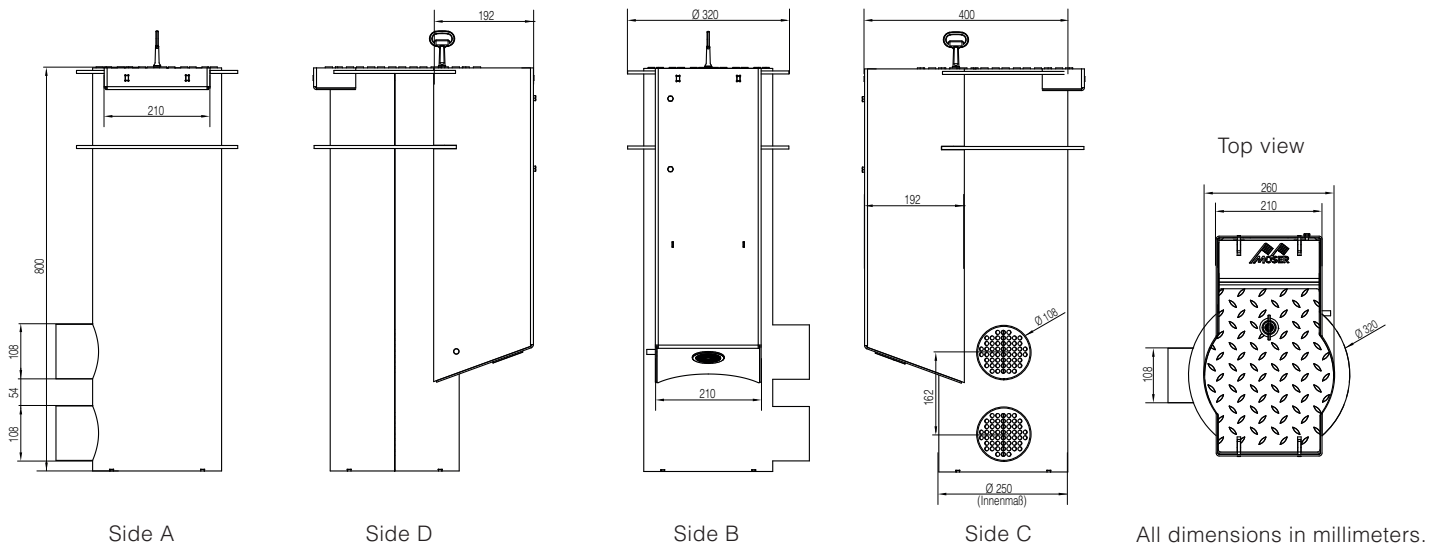
Dimensions:	436x320x800mm (LxWxH)
Installation depth:	800mm
Ingress protection:	IP68 (Protective contact coupling)
Protection class:	I
Load capacity:	40t DIN EN 124 - D400
Material:	V2A stainless steel (1.4301)
Equipment:	2 x Protective contact coupling 16A 2P+E 230V IP68
max. back-up fuse:	16A (with RCD on-site)
Connection size:	3x4qmm
Weight:	approx. 40kg



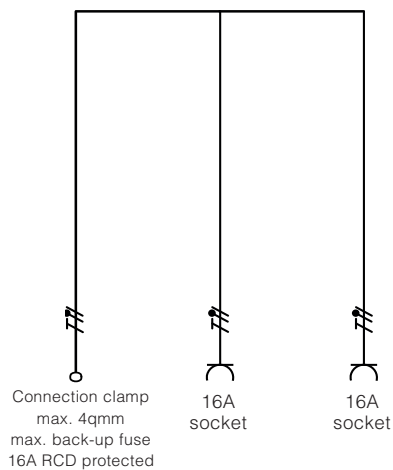
PRODUCT DATA SHEET

PAGE 2/2

DIMENSIONS



WIRING DIAGRAM



Modifications and errors excepted. No liability accepted for printing errors.
Our terms of delivery and payment apply.