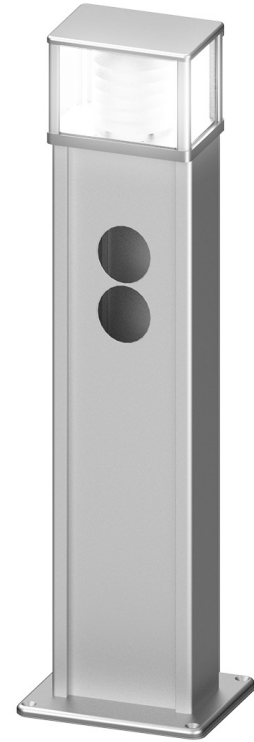


**PRODUCT DATA SHEET**

PAGE 1/2

MS18 Electrical connection column

Item no. MD80800150

**TECHNICAL DATA**

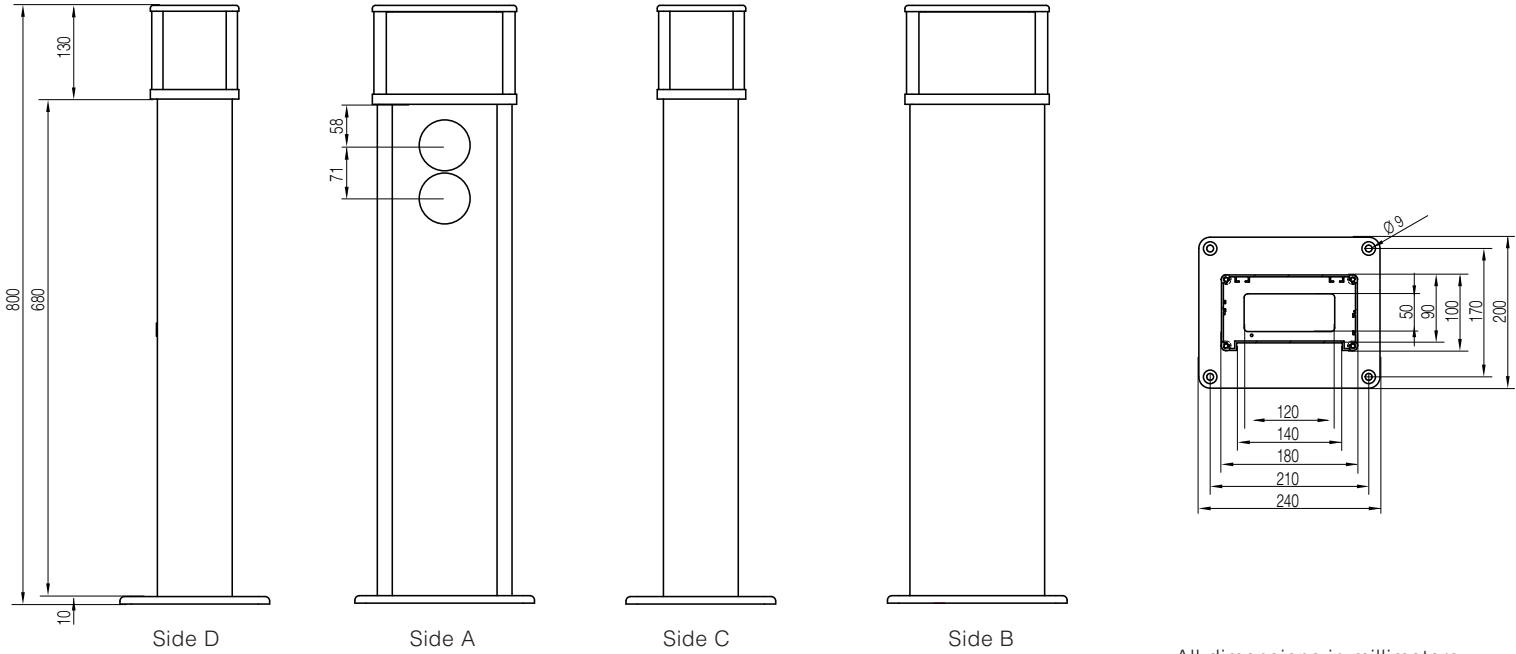
|                     |   |
|---------------------|---|
| Dimensions:         | 180x100x800mm (WxDxH)   |
| Ingress protection: | IPX4  |
| Protection class:   | I   |
| Material:           | Aluminum, anodized E6/EV1   |
| Color:              | silver  |
| Aussparungen:       | 2 x Hole pattern no. 13.1 Ø68mm for cavity wall boxes for double frame  |
| Light module:       | LED Mounting light<br>- Lamp holder E27<br>- Light source: LED lamp 9W, 220V, daylight white ~6.000K<br>- pre-wired on connection clamps 3x4qmm |
| Weight:             | approx. 7,4kg   |



## PRODUCT DATA SHEET

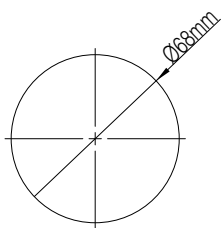
PAGE 2/2

### DIMENSIONS

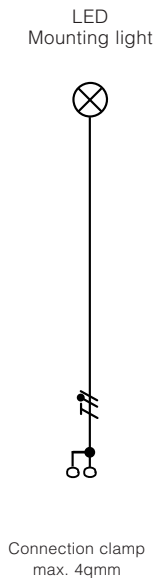


All dimensions in millimeters.

### HOLE PATTERN



### WIRING DIAGRAM



Modifications and errors excepted. No liability accepted for printing errors.  
Our terms of delivery and payment apply.