



MOSER SYSTEMELEKTRIK GMBH

CONNECTION COLUMNS ENERGY BOLLARDS
UNDERGROUND DISTRIBUTORS STANDING CABINETS
KERNERSTRASSE 15 74405 GAILDORF GERMANY

PRODUCT DATA SHEET

PAGE 1/2

MS18 Electrical connection column

Item no. MD71400001



TECHNICAL DATA

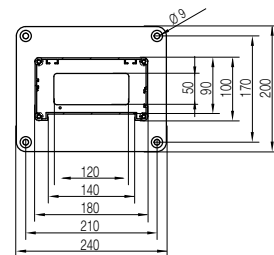
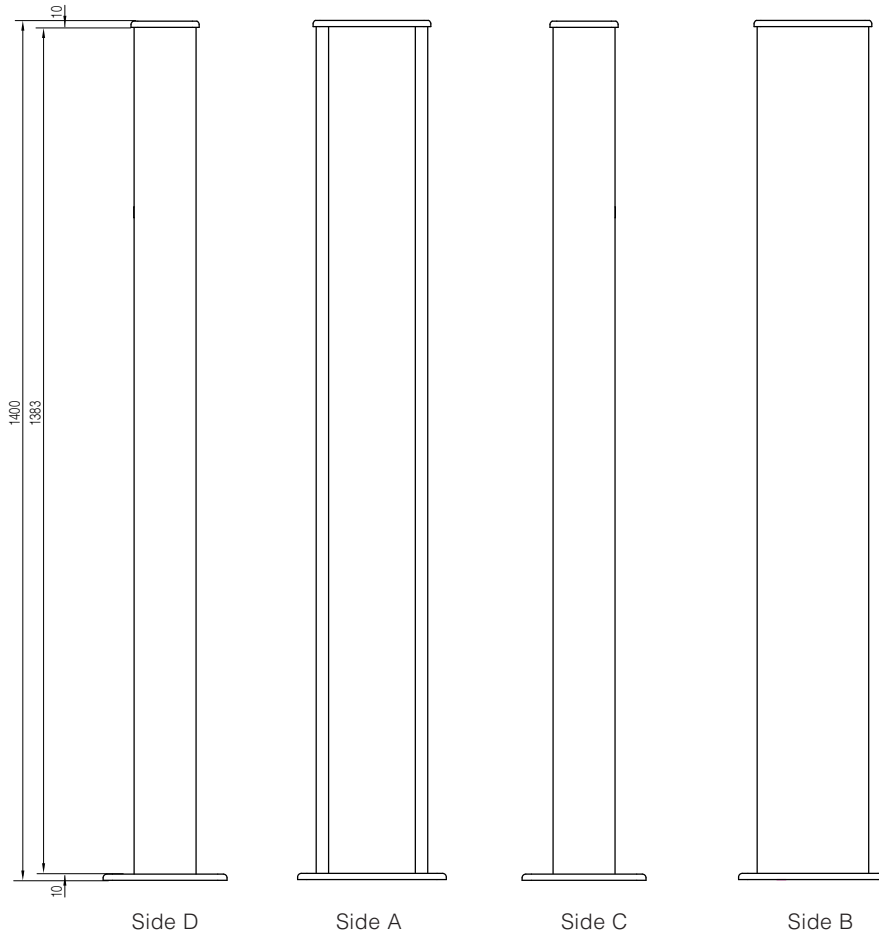
Dimensions:	180x100x1400mm (WxDxH)
Ingress protection:	IPX4
Protection class:	I
Material:	Aluminum, anodized E6/EV1
Color:	silver
Hole pattern / section:	without
Light module:	LED-Orientation light - with inserted LED light strip, water resistant shed - LED driver 24V - pre-wired on connection clamps 2x4qmm
Weight:	approx. 11kg



PRODUCT DATA SHEET

PAGE 2/2

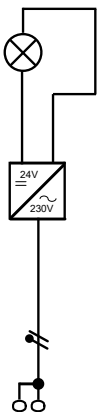
DIMENSIONS



All dimensions in millimeters.

WIRING DIAGRAM

LED
Orientation light



Connection clamp
max. 4qmm

Modifications and errors excepted. No liability accepted for printing errors.
Our terms of delivery and payment apply.