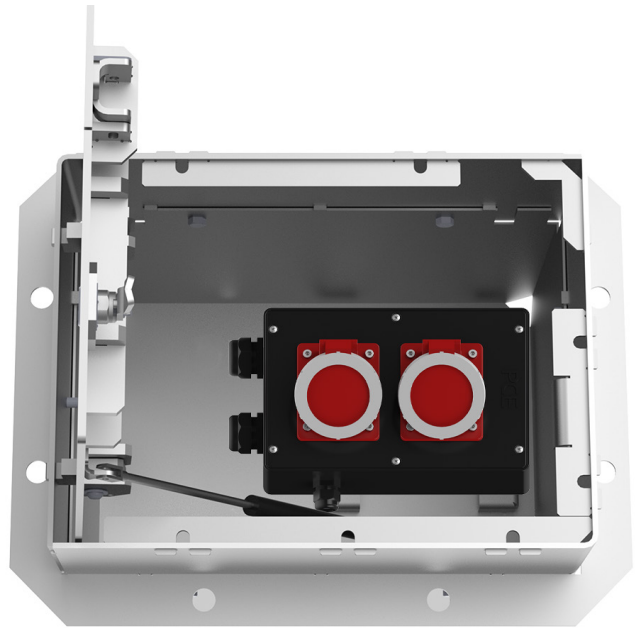


**PRODUCT DATA SHEET**

PAGE 1/2

SEK30 - compact underfloor distributor

Item no. M5063000033

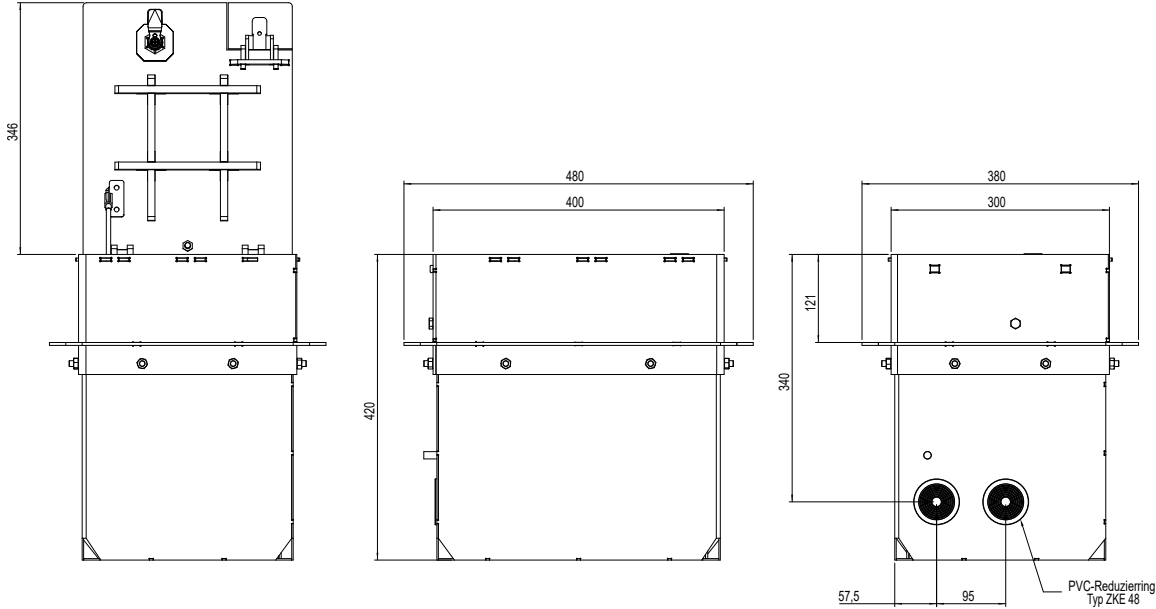
**TECHNICAL DATA**

Dimensions:	480x380x420mm (LxWxD)
Installation depth:	400mm
Dimensions visible cover:	400x300mm (LxW)
Load capacity:	12,5t DIN EN 124 - B125
Material:	V2A stainless steel (1.4301)
Interlocking:	by sash lock (square)
Drainage:	via four recesses in the lower part of the housing
Ingress protection:	IP67
Protection class:	I
Equipment:	2 x CEE socket 32A 5P 400V IP67
max. back-up fuse:	32A
Power supply terminals:	2x5x10qmm
Cable gland (Infeed):	2 x M32
Cable gland (Grounding):	1 x M20
Weight:	approx. 25kg



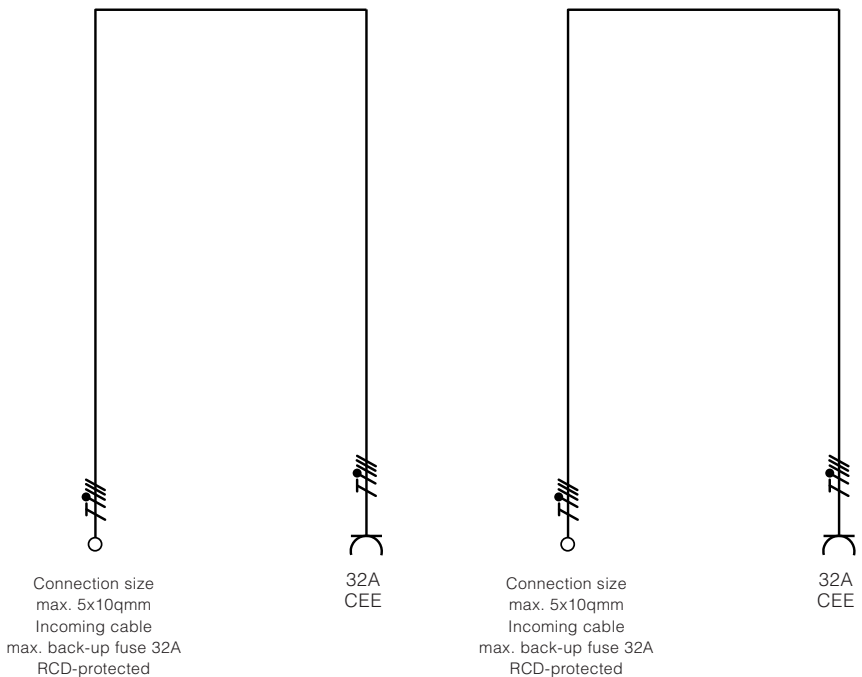
**PRODUCT DATA SHEET**  
 PAGE 2/2

**DIMENSIONS**



All dimensions in millimeters.

**WIRING DIAGRAM**



Modifications and errors excepted. No liability accepted for printing errors.  
 Our terms of delivery and payment apply.