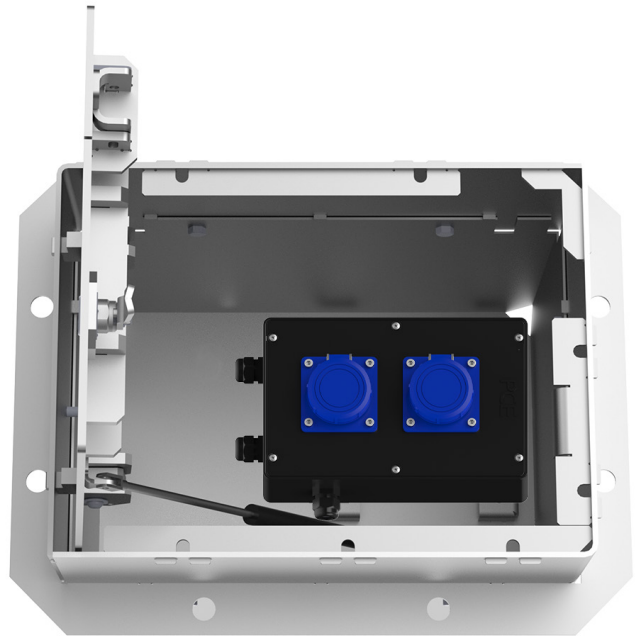


**PRODUCT DATA SHEET**

PAGE 1/2

SEK30 - compact underfloor distributor

Item no. M5063000013

**TECHNICAL DATA**

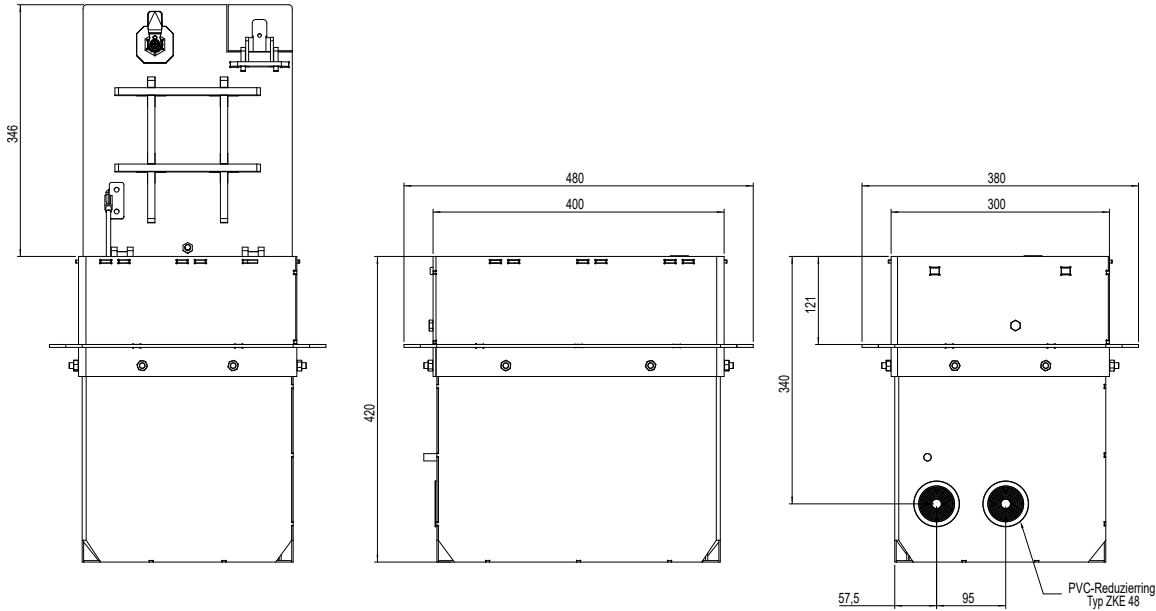
Dimensions:	480x380x420mm (LxWxD)
Installation depth:	400mm
Dimensions visible cover:	400x300mm (LxW)
Load capacity:	12,5t DIN EN 124 - B125
Material:	V2A stainless steel (1.4301)
Interlocking:	by sash lock (square)
Drainage:	via four recesses in the lower part of the housing
Ingress protection:	IP67 (Distributor), IP68 (Sockets)
Protection class:	I
Equipment:	2 x Protective contact socket 16A 2P+E 230V IP68
max. back-up fuse:	16A
Power supply terminals:	2x3x10qmm
Cable gland (Infeed):	2 x M20
Cable gland (Grounding):	1 x M20
Weight:	approx. 25kg



PRODUCT DATA SHEET

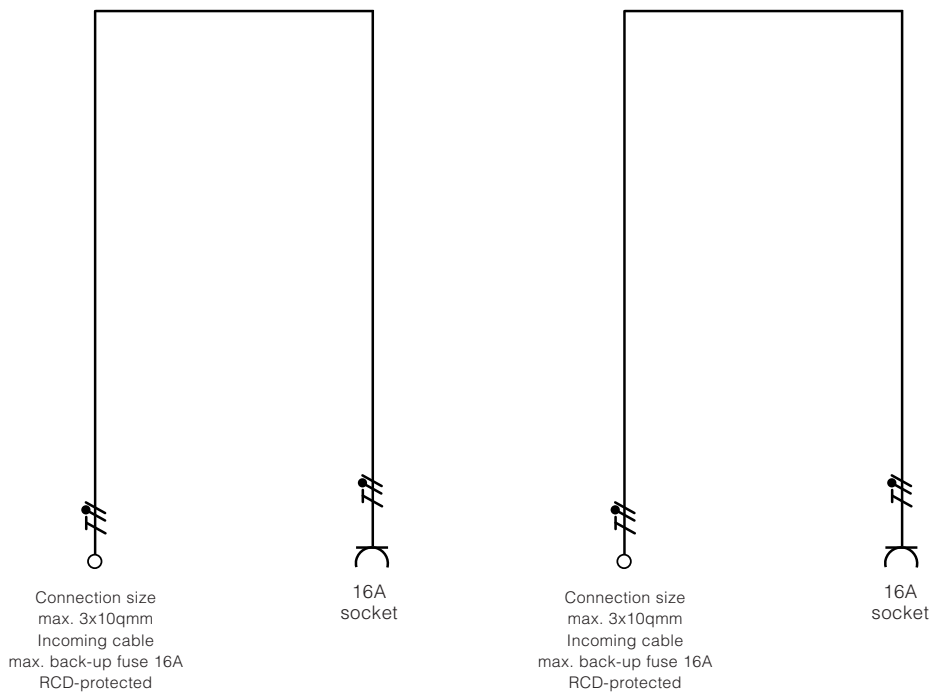
PAGE 2/2

DIMENSIONS



All dimensions in millimeters.

WIRING DIAGRAM



Modifications and errors excepted. No liability accepted for printing errors.
Our terms of delivery and payment apply.