

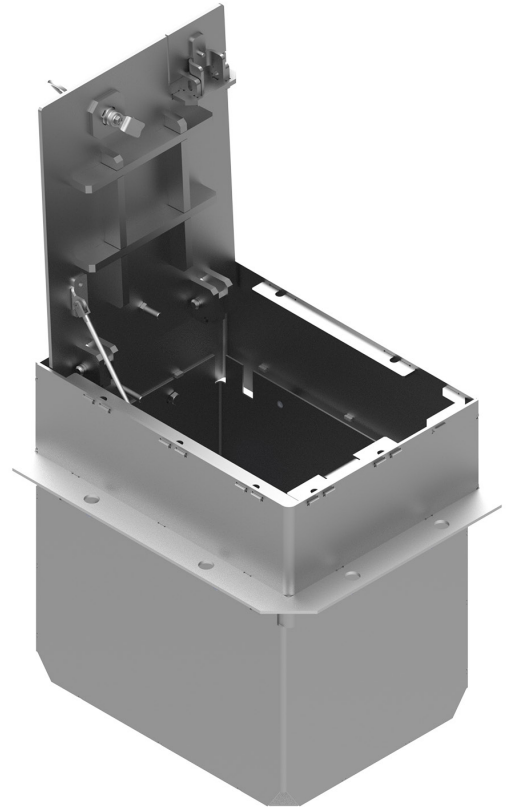


PRODUCT DATA SHEET

PAGE 1/2

SEK30 - compact underfloor distributor

Item no. M5063000003



TECHNICAL DATA

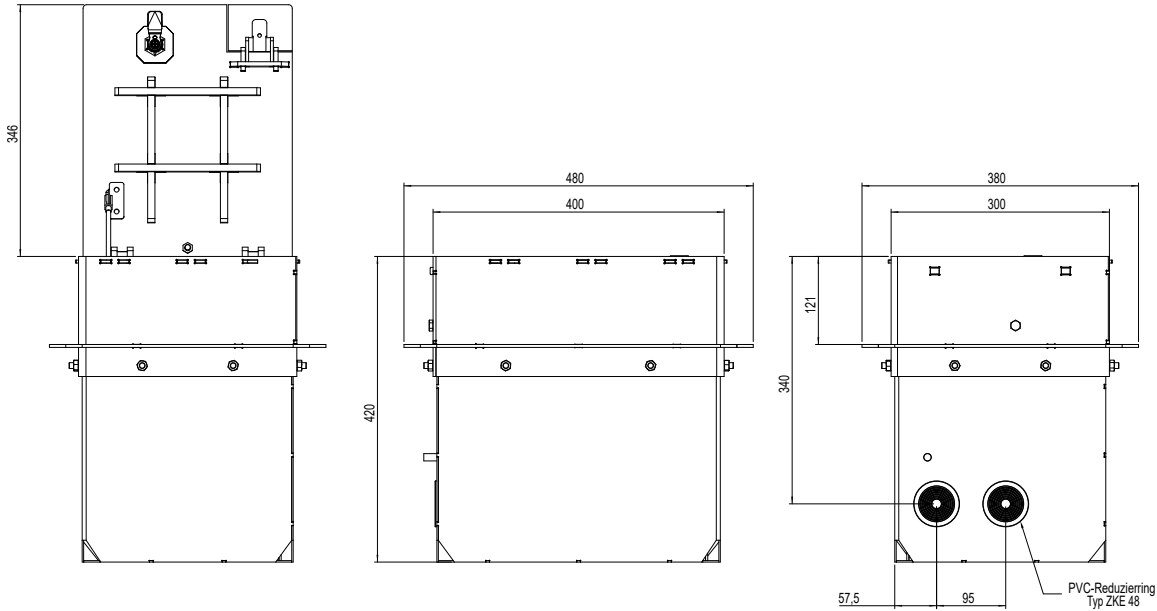
Dimensions:	480x380x420mm (LxWxD)
Installation depth:	400mm
Dimensions visible cover:	400x300mm (LxW)
Load capacity:	12,5t DIN EN 124 - B125
Material:	V2A stainless steel (1.4301)
Interlocking:	by sash lock (square)
Drainage:	via four recesses in the lower part of the housing
Ingress protection:	depending on the equipment
Protection class:	I
Equipment:	Empty housing, without equipment
Weight:	approx. 25kg



PRODUCT DATA SHEET

PAGE 2/2

DIMENSIONS



All dimensions in millimeters.

Modifications and errors excepted. No liability accepted for printing errors.
Our terms of delivery and payment apply.