

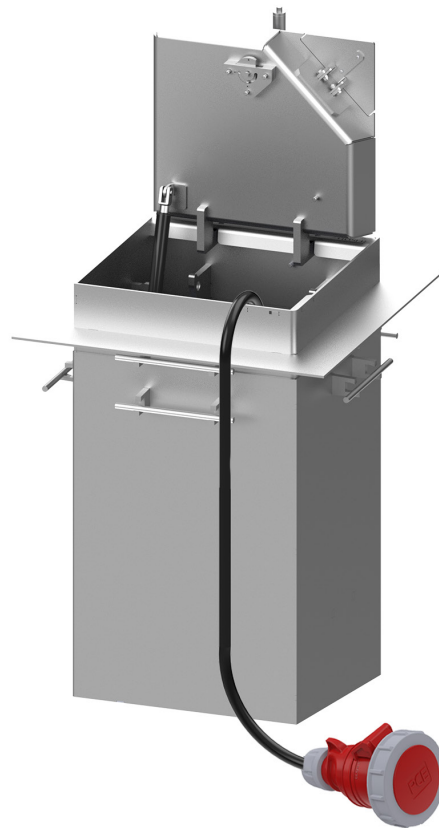


PRODUCT DATA SHEET

PAGE 1/2

SEK40 - Underfloor distributor with hinged cover

Item no. M5044400123



TECHNICAL DATA

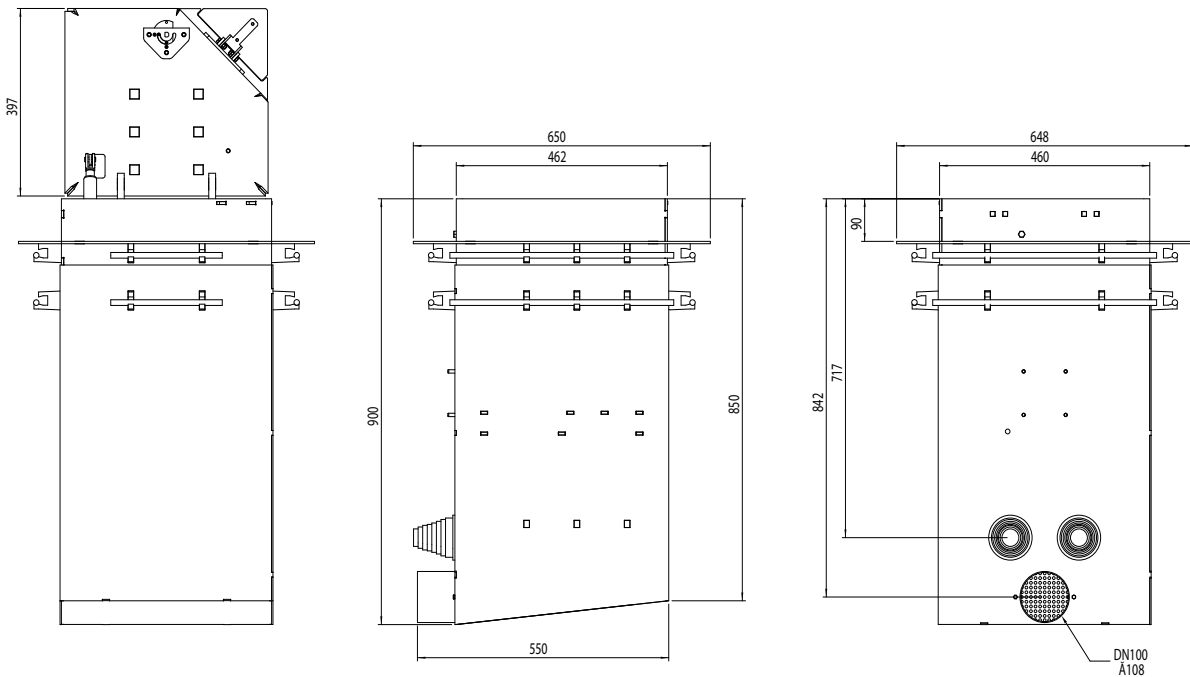
Dimensions:	650x648x900mm (LxWxD)
Installation depth:	900mm
Dimensions visible cover:	462x460mm (LxW)
Load capacity:	40t DIN EN 124 - D400
Material:	V2A stainless steel (1.4301)
Interlocking:	via locking system incl. actuation key
Drainage:	on site through pipe socket Ø108mm to the local sewerage system
Ingress protection:	IP67 (CEE coupling)
Protection class:	I
Equipment:	1 x CEE coupling 125A 5P 400V IP67
Weight:	approx. 100kg



PRODUCT DATA SHEET

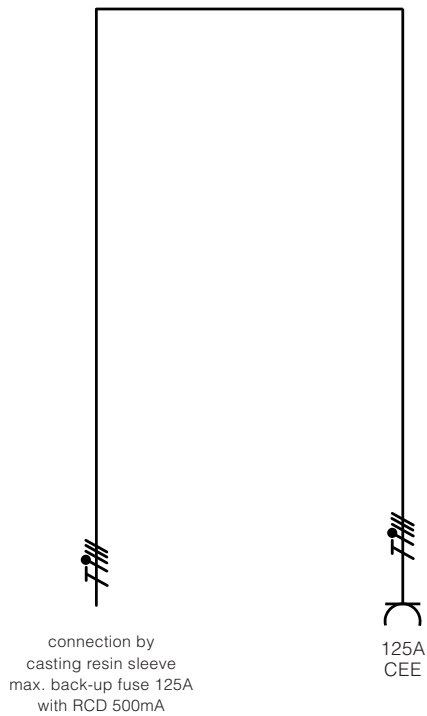
PAGE 2/2

DIMENSIONS



WIRING DIAGRAM

All dimensions in millimeters.



Modifications and errors excepted. No liability accepted for printing errors.
Our terms of delivery and payment apply.