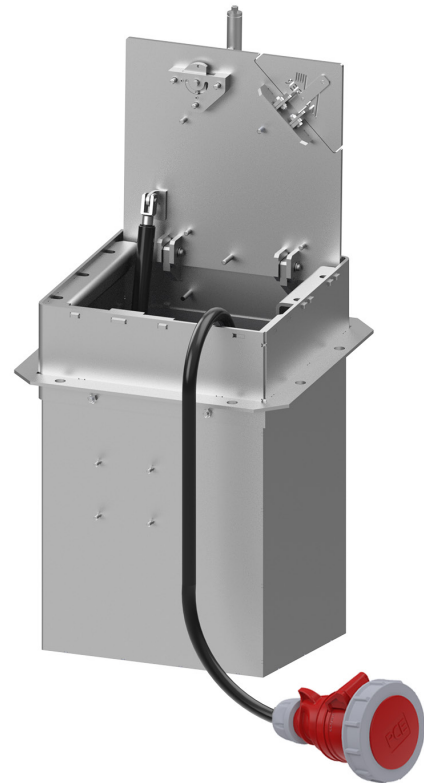


**PRODUCT DATA SHEET**

PAGE 1/2

SEK40 - Underfloor distributor with hinged cover

Item no. M5044100133

**TECHNICAL DATA**

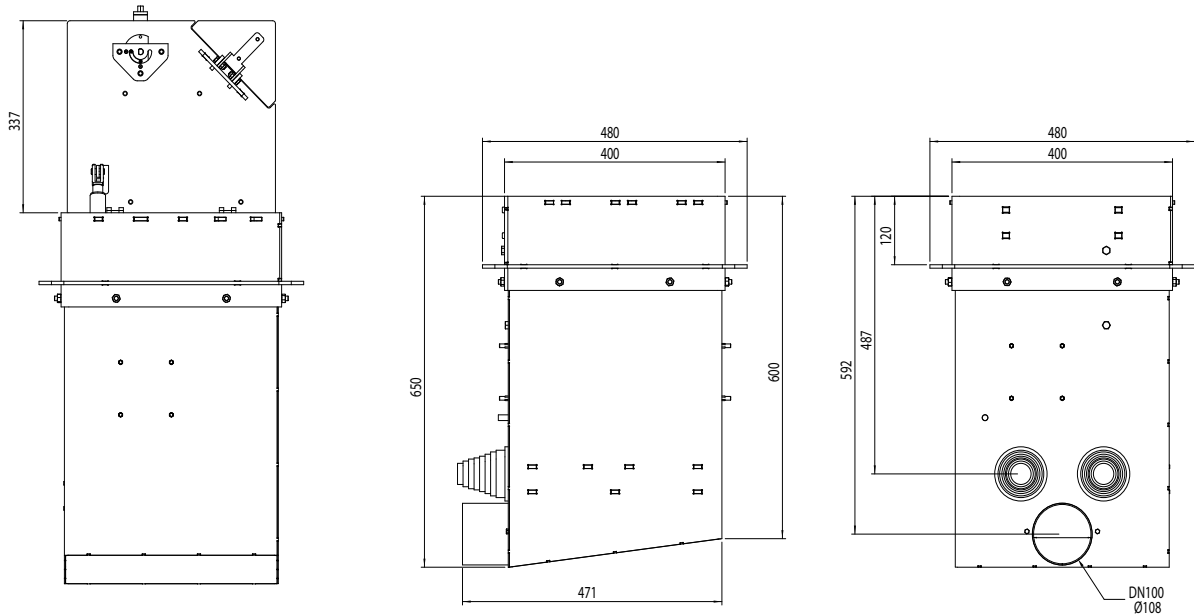
Dimensions:	480x480x650mm (LxWxD)
Installation depth:	650mm
Dimensions visible cover:	400x400mm (LxW)
Load capacity:	1,5t DIN EN 124 - A15
Material:	V2A stainless steel (1.4301)
Interlocking:	via locking system incl. actuation key
Drainage:	on site through pipe socket Ø108mm to the local sewerage system
Ingress protection:	IP67 (CEE coupling)
Protection class:	I
Equipment:	1 x CEE coupling 125A 5P 400V IP67
Weight:	approx. 65kg



## PRODUCT DATA SHEET

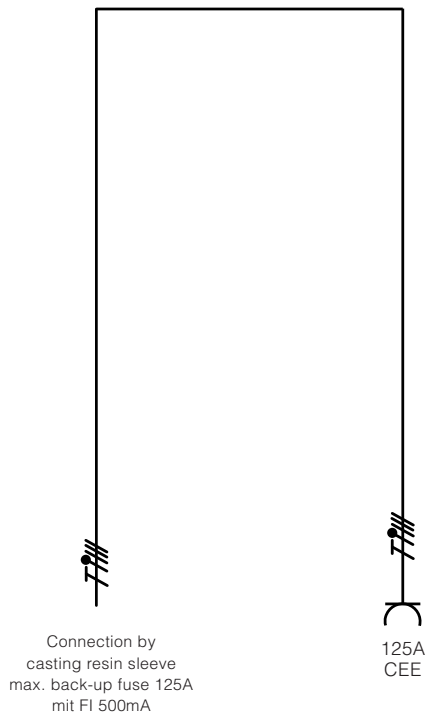
PAGE 2/2

### DIMENSIONS



All dimensions in millimeters.

### WIRING DIAGRAM



Modifications and errors excepted. No liability accepted for printing errors.  
Our terms of delivery and payment apply.